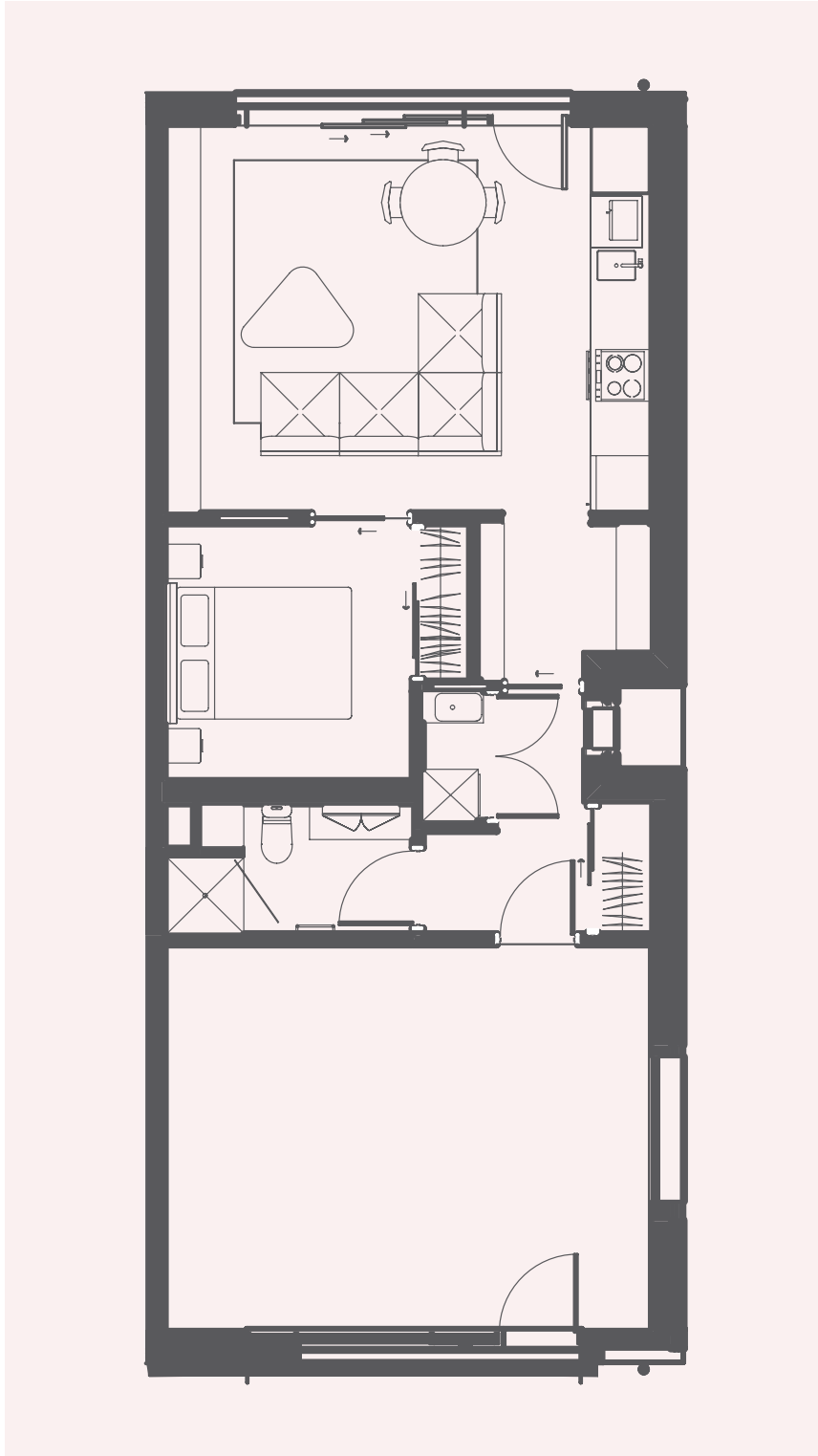


# LIVE-WORK APARTMENTS

## FLOORPLAN



**87-90** M<sup>2</sup> Interior

**15-26** M<sup>2</sup> Patio

**1** Bedrooms

**1** Bathrooms

### Units

Ground Floor:  
G01, G02, G04, G06, G07

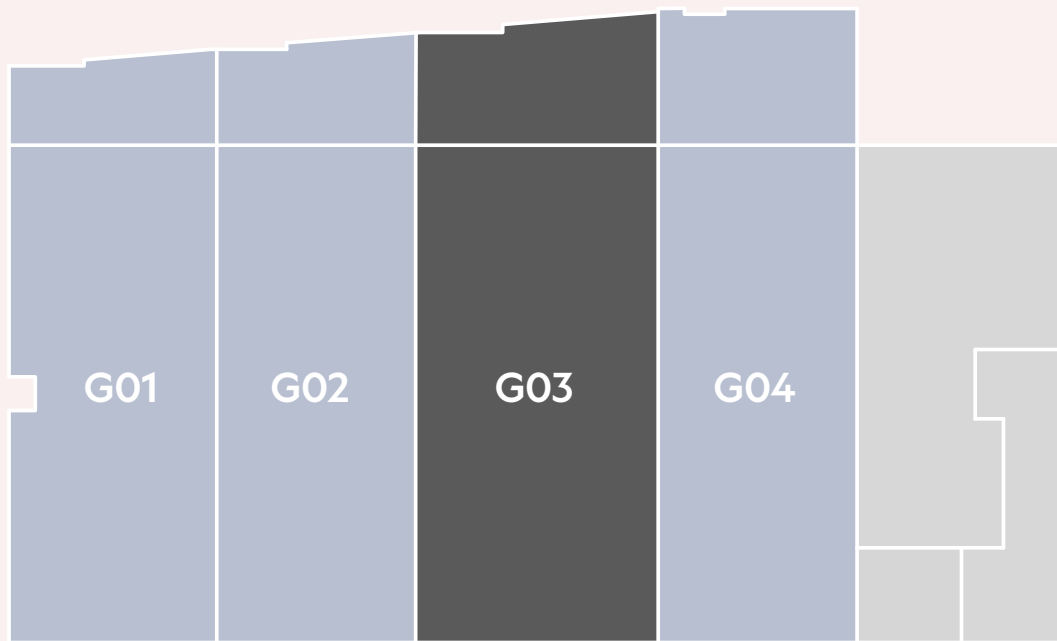
### DISCLAIMER



This brochure, any outline plan and specifications, preliminary subdivision plan showing the concept of the Te Pā Tāhuna development, the property (terrace house or unit), or specifications have all been prepared prior to the completion of construction of the development. Whilst every reasonable effort has been made to ensure the information and calculations correctly illustrate the development and the property (terrace house or unit), they can only be used for guidance and no responsibility will be taken for any differences, changes or errors or omissions which may become apparent whether before or after completion of the Te Pā Tāhuna development and the finalisation of "as built" plans, specifications and calculations. The information is subject to change and subject to contract. It will be superseded by any plans and/or specifications and other such information contained in any such contract entered into in respect of the Te Pā Tāhuna development which will be subject to the terms of that contract.



# GROUND LEVEL LAYOUT

## FLOORPLAN



-  Live-work apartment
-  Large live-work apartment

### DISCLAIMER

This brochure, any outline plan and specifications, preliminary subdivision plan showing the concept of the Te Pā Tāhuna development, the property (terrace house or unit), or specifications have all been prepared prior to the completion of construction of the development. Whilst every reasonable effort has been made to ensure the information and calculations correctly illustrate the development and the property (terrace house or unit), they can only be used for guidance and no responsibility will be taken for any differences, changes or errors or omissions which may become apparent whether before or after completion of the Te Pā Tāhuna development and the finalisation of "as built" plans, specifications and calculations. The information is subject to change and subject to contract. It will be superseded by any plans and/or specifications and other such information contained in any such contract entered into in respect of the Te Pā Tāhuna development which will be subject to the terms of that contract.